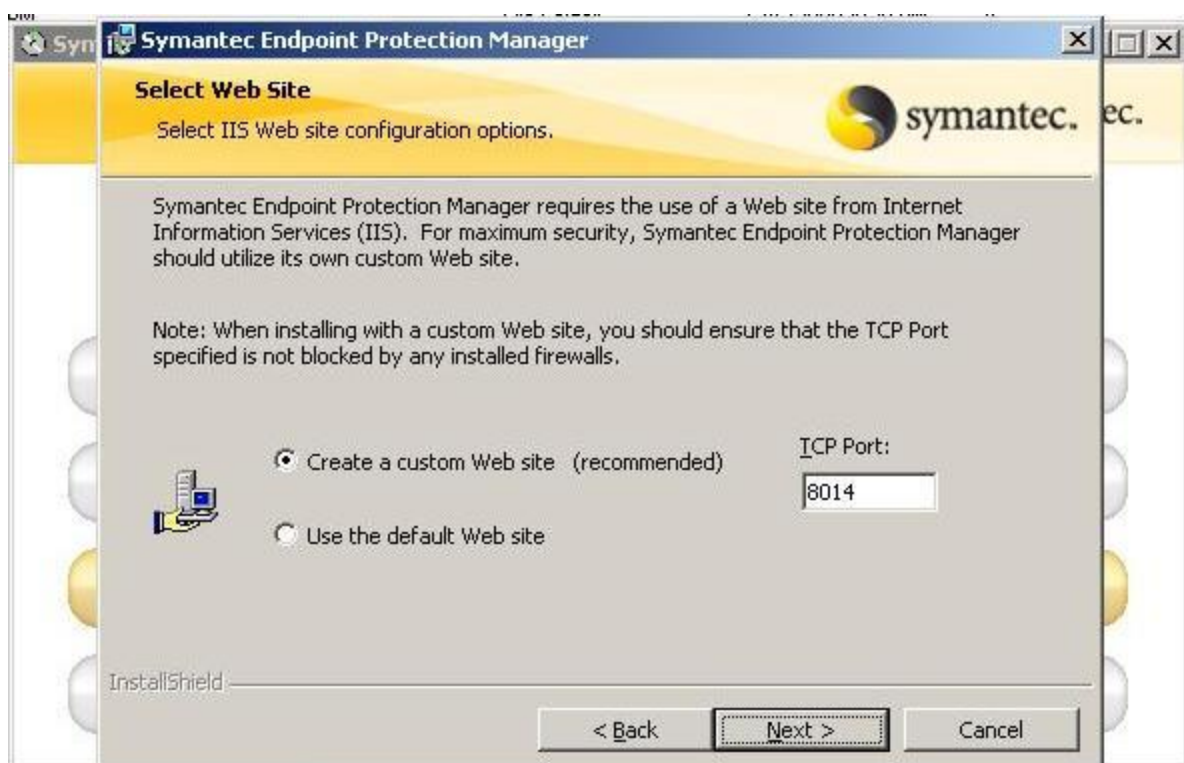


Symantec End Point Protection 11.1 Installation and configuration





Management Server Configuration Wizard

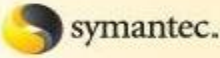
Specify the server name, port number, web console port, and data folder for the management server you want to install or configure.

Server name:

Server port:

Web console port:

Server data folder:

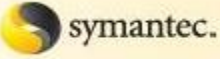


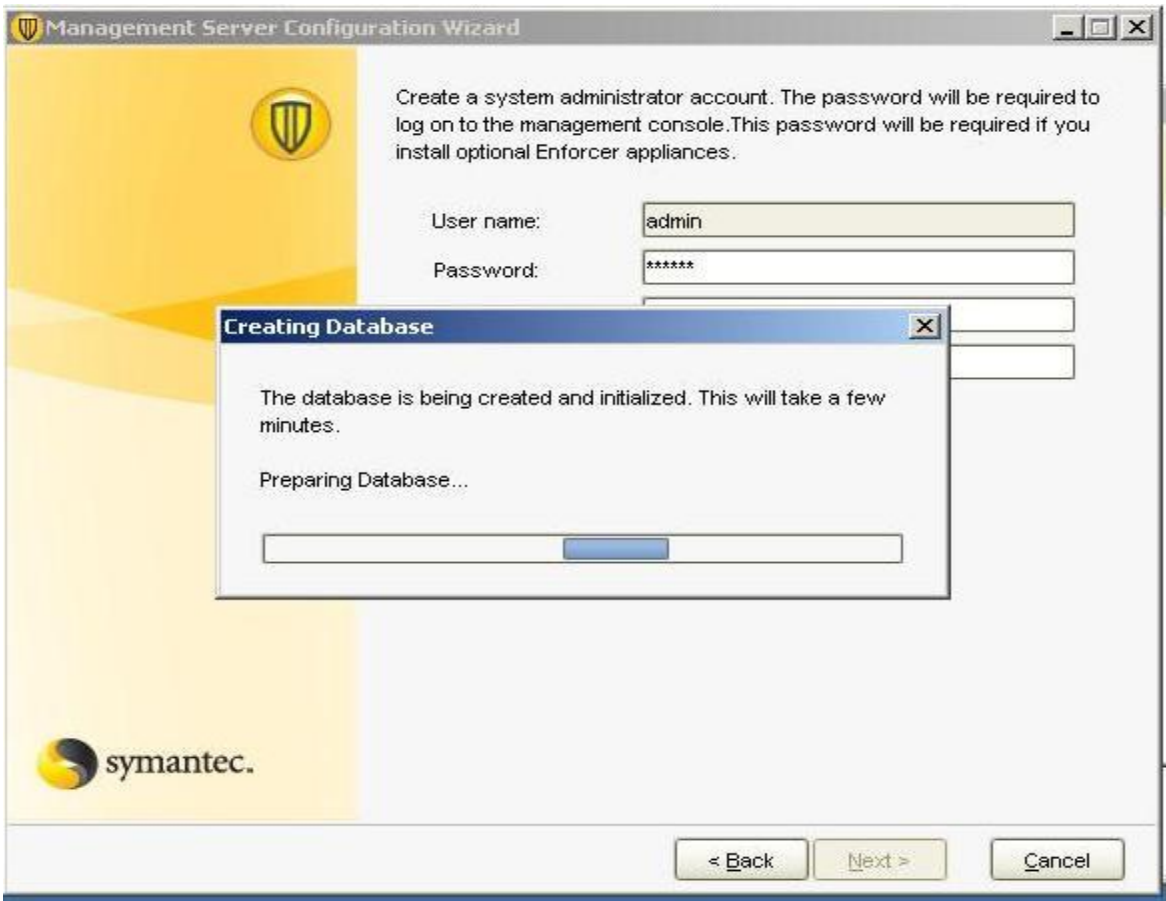
Management Server Configuration Wizard

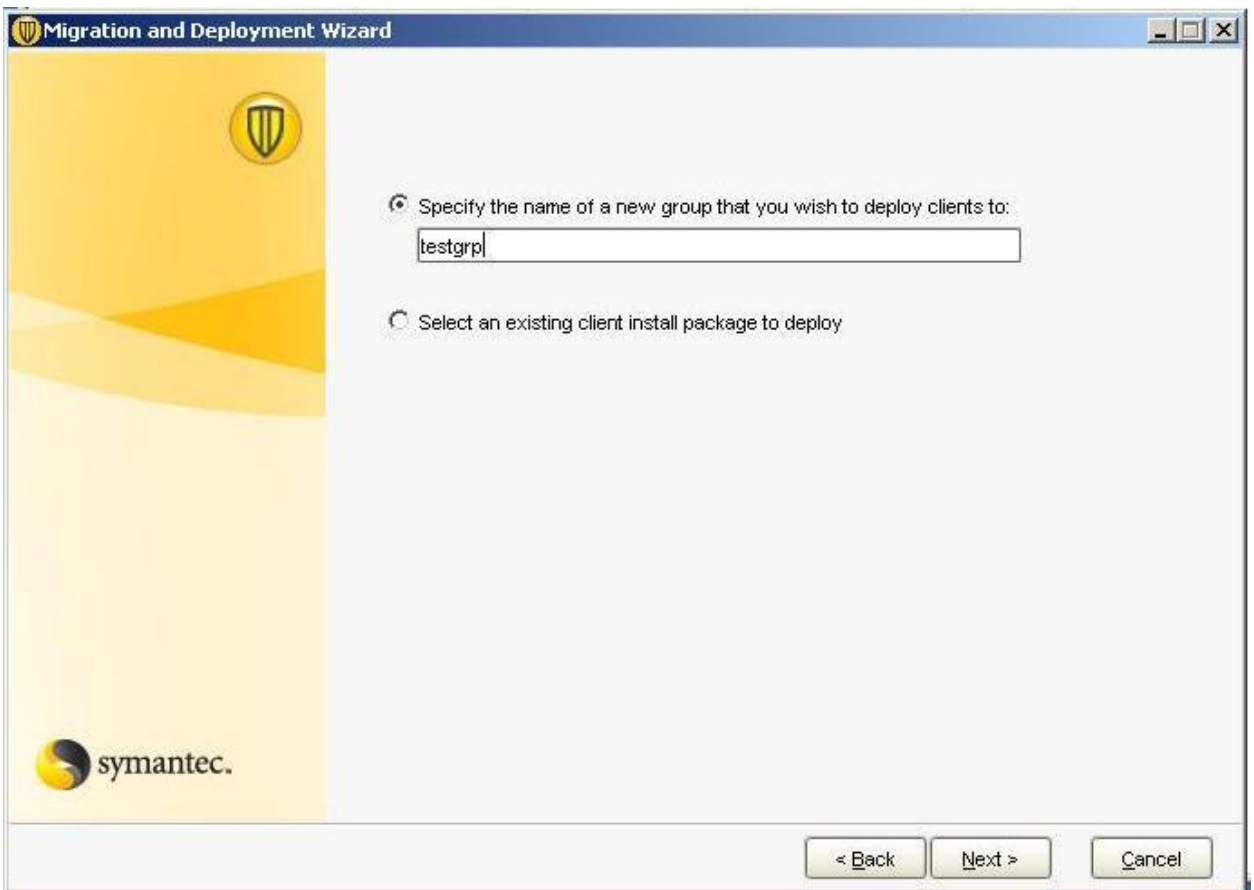
Select the type of database you want to use:

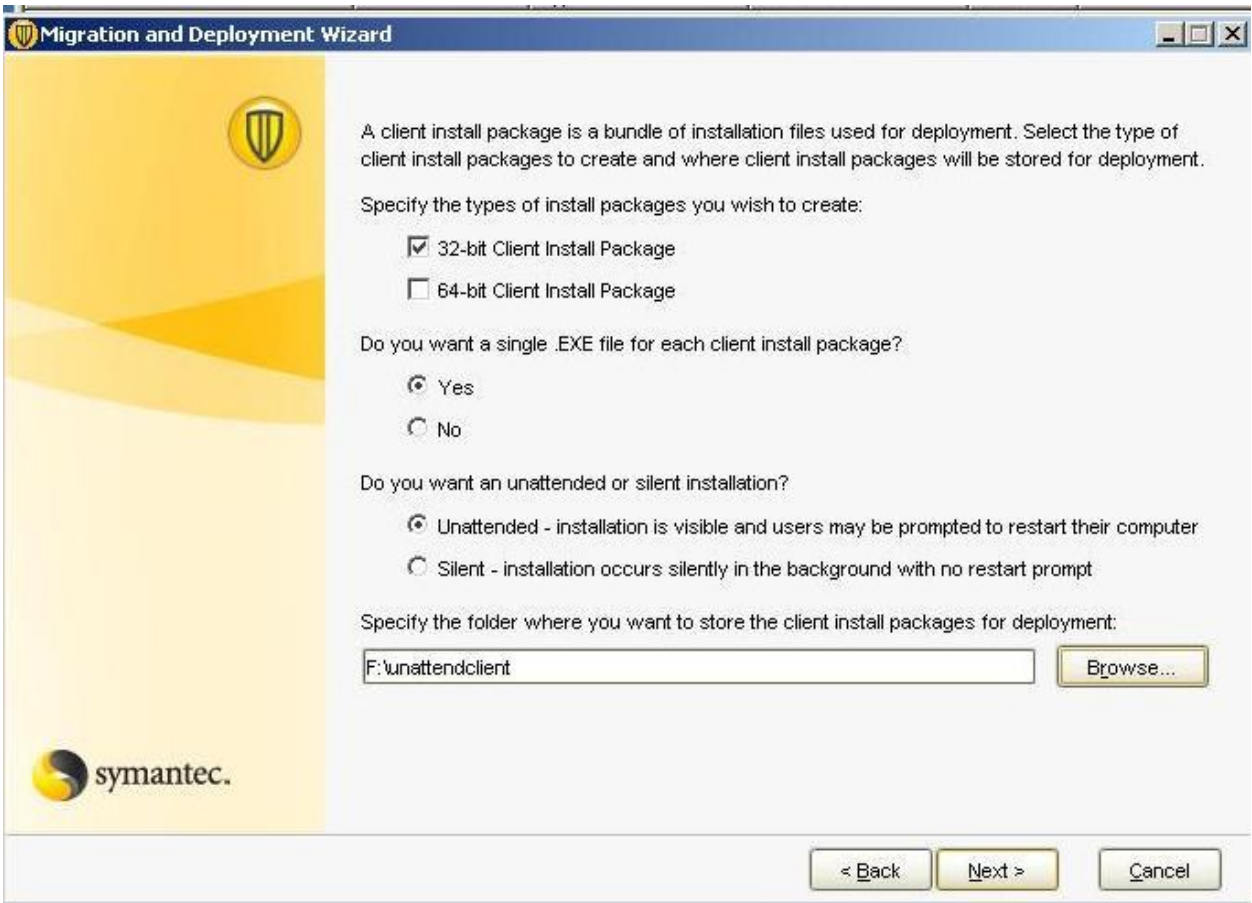
Suggested for organizations with up to 5,000 client computers.

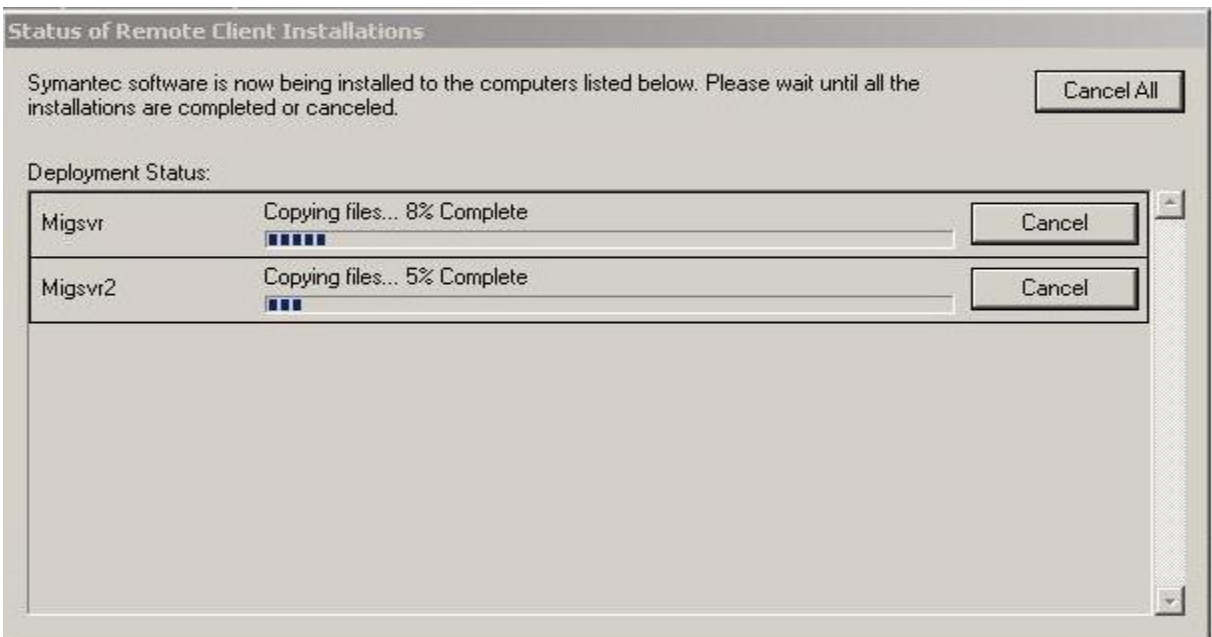
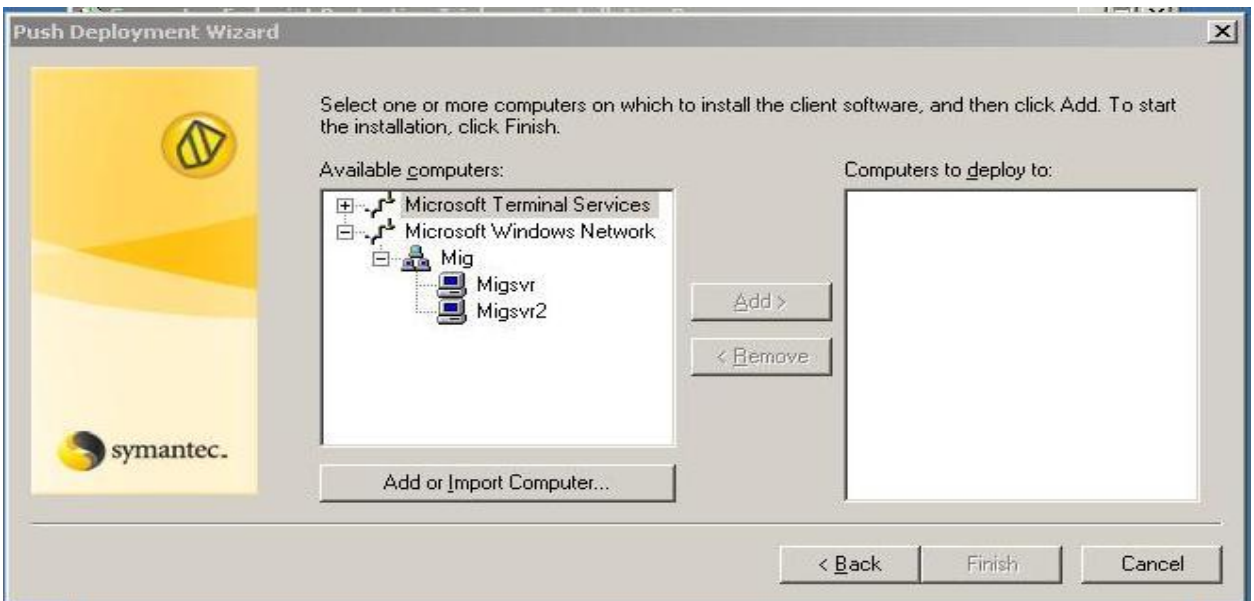
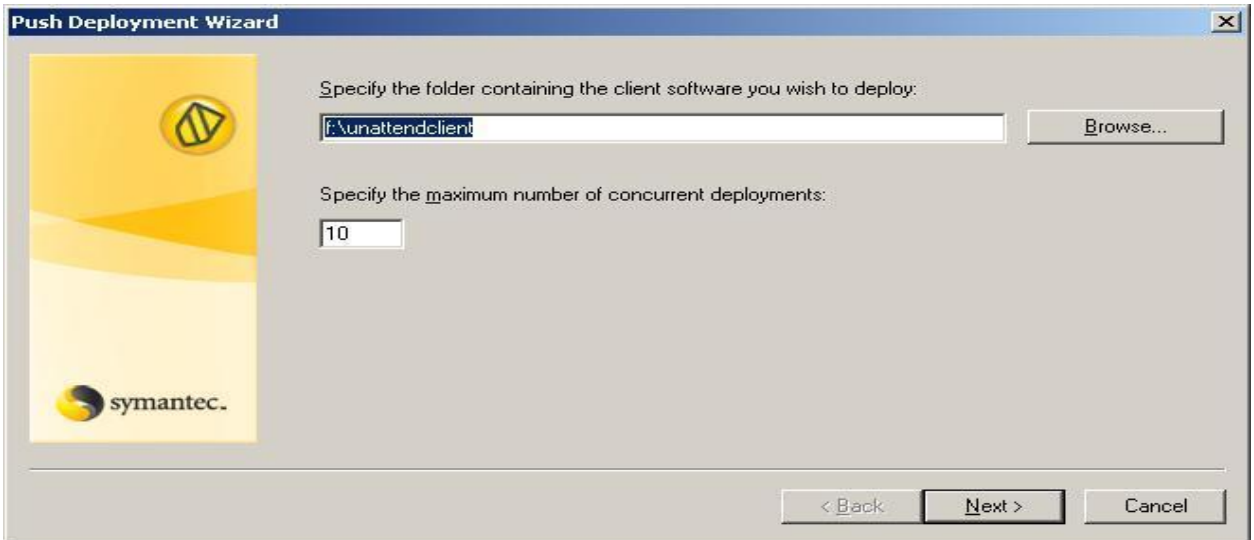
Microsoft SQL Server

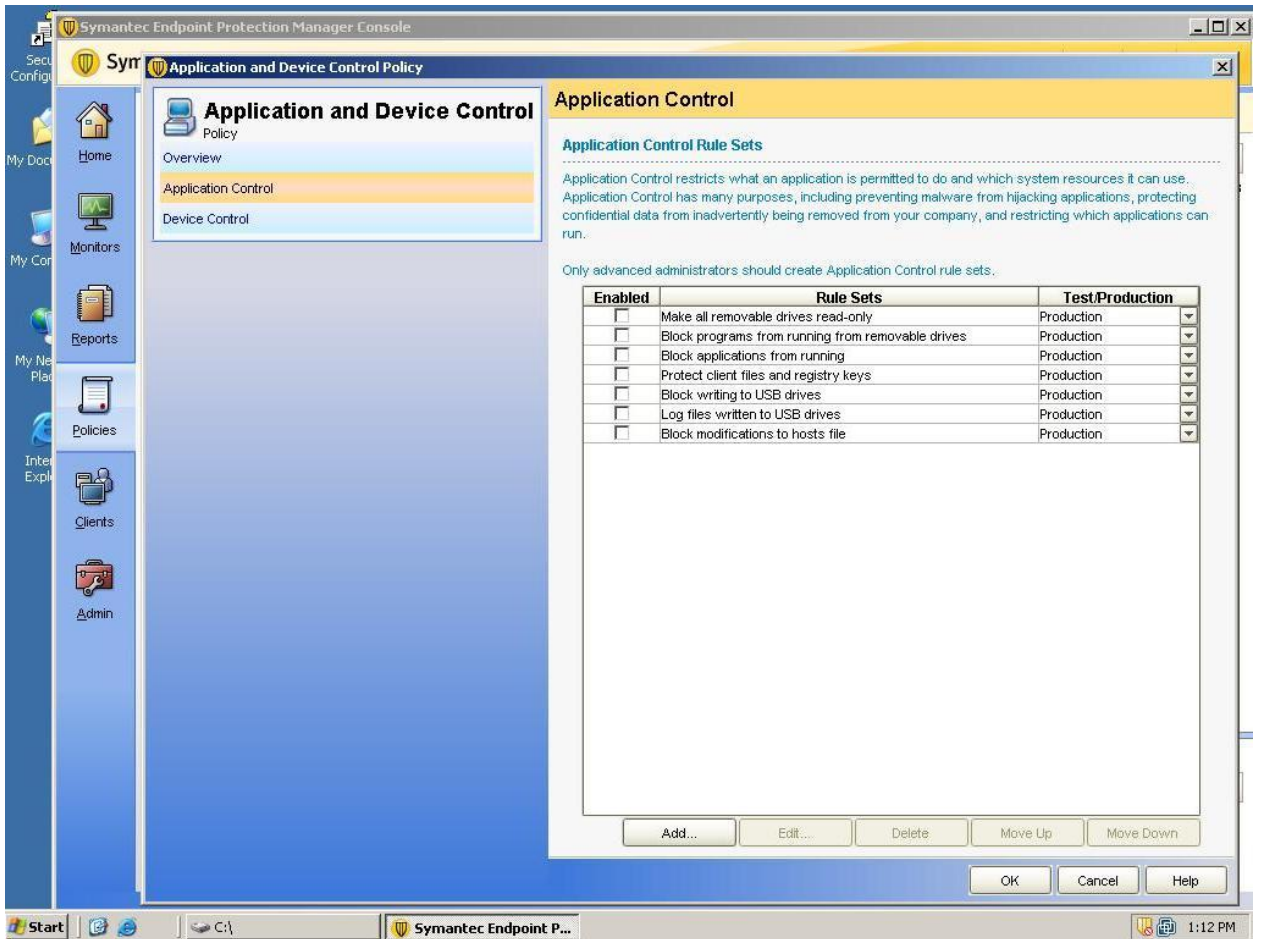
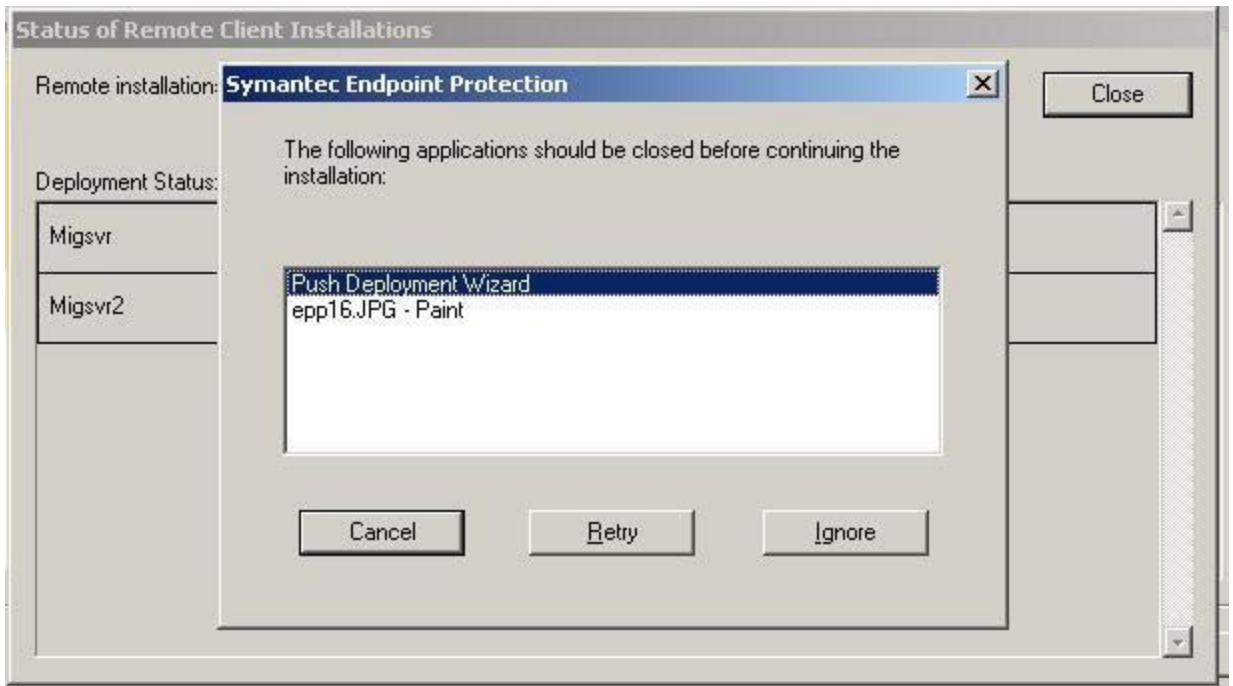


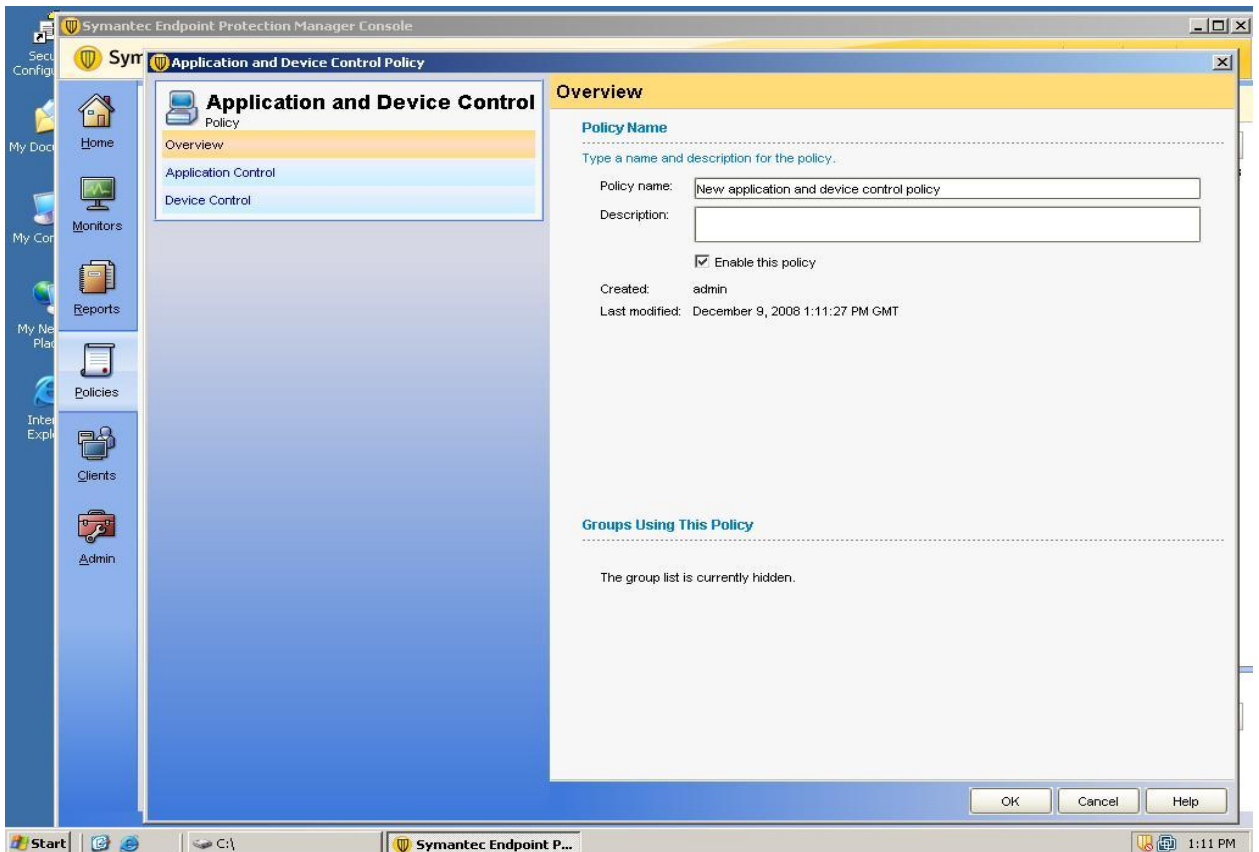
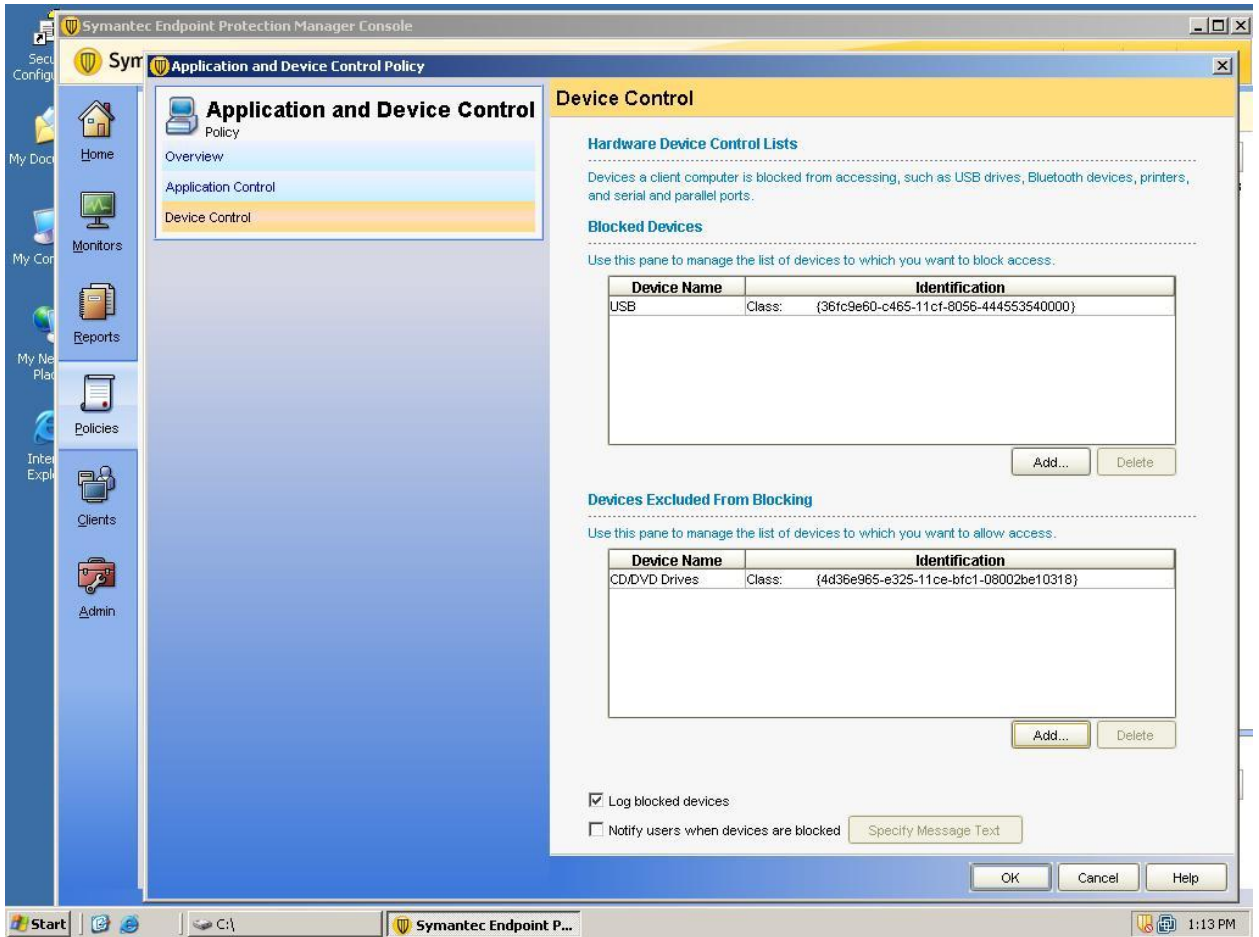












Symantec Endpoint Protection Manager Console

Symantec™ Endpoint Protection Manager Trialware Refresh About Help Log Off

View Clients **testgrp**

My Company

- Default Group
- testgrp**

Tasks

- Add Group...
- Add Computer Account
- Add User Account
- Import Organizational Unit or Conf
- Import Active Directory or LDAP L
- Run Command on Group
- Search Clients
- Set Display Filter
- Find Unmanaged Computers

Clients Policies Details Install Packages

View: Default view Save Column Order

This group contains the following clients: < Previous Next >

Name	Domain/Workgroup	Logon Client	Description
(Empty table)			

Start C:\ Symantec Endpoint P... 1:08 PM

Symantec Endpoint Protection Manager Console

Symantec™ Endpoint Protection Manager Trialware Refresh About Help Log Off

Home Monitors Reports Policies Clients Admin

Security Status Preferences

Security Status - Good More Details

Action Summary by Detection Count

Action	Viruses	Security Risks
Cleaned	0	0
Suspicious	0	0
Blocked	0	0
Quarantined	0	0
Deleted	0	0
Newly Infected	0	0
Still Infected	0	0

Risks Per Hour: Last 24 hours Click numbers for details.

Display: Risks

Security Status Summary

Component	Computers
Antivirus Engine Off	0
Auto-Protect Off	0
Tamper Protection Off	0
Restart Required	0
Host Integrity Failed	0

No unacknowledged notifications in the last 24 hours

Virus Definitions Distribution : Last 12 Hours

Display: Virus Definitions Distribution

Definitions	Computers
(Empty table)	

Latest Symantec Version: Information is currently unavailable
Latest Manager Version: Information is currently unavailable

Security Response

No data, possibly because no Internet access since install time.

- Security Alerts
- Symantec
- Definitions
- Latest Threats
- Security Focus

Watched Applications Summary

Application	Occurrences
Commercial Application Detection	0
Forced TruScan Proactive Threat Detection	0

Favorite Reports +

- Top Sources of Attack
- Top Risk Detections Correlation
- TruScan Proactive Threat Distribution

Start C:\ Symantec Endpoint P... 1:03 PM

Symantec Endpoint Protection Manager Console

Symantec™ Endpoint Protection Manager Trialware Refresh About Help Log Off

View Policies

- Antivirus and Antispyware
- Firewall
- Intrusion Prevention
- Application and Device Control
- Host Integrity
- LiveUpdate
- Centralized Exceptions

Policy Components

- Scheduled Scan Templates
- Management Server Lists
- File Fingerprint Lists
- Host Groups
- Network Services
- Network Adapters
- Hardware Devices

Tasks

- Add a Hardware Device...
- Search for Applications

Hardware Devices

Device Name	Identification
Human Interface Devices (Mice, Joysticks, Gamepads, and System c...	Class: {745a17a0-74d3-11d0-b6fe-00a0c90f57da}
USB	Class: {36fc9e60-c465-11cf-8056-444553540000}
Floppy	Class: {4d36e969-e325-11ce-bf1c-08002be10318}
1394 FireWire Host Controller	Class: {6bdd1fc1-810f-11d0-bec7-08002be2092f}
IDE	Class: {4d36e96a-e325-11ce-bf1c-08002be10318}
Tape Drives	Class: {6d807884-7d21-11cf-801c-08002be10318}
CD/DVD Drives	Class: {4d36e965-e325-11ce-bf1c-08002be10318}
Printing Devices	Class: {4d36e979-e325-11ce-bf1c-08002be10318}
PCMCIA	Class: {4d36e977-e325-11ce-bf1c-08002be10318}
Imaging Devices (Scanners, Digital Cameras, etc)	Class: {6bdd1fc6-810f-11d0-bec7-08002be2092f}
Infrared Devices	Class: {6bdd1fc5-810f-11d0-bec7-08002be2092f}
Bluetooth Radios	Class: {e0cbf06c-cd8b-4647-bb8a-263b43f0f974}
SCSI	Class: {4d36e97b-e325-11ce-bf1c-08002be10318}
Modems	Class: {4d36e96d-e325-11ce-bf1c-08002be10318}
Smart Card Readers	Class: {50dd5230-ba8a-11d1-bf5d-00001805f530}
Ports	Class: {4d36e978-e325-11ce-bf1c-08002be10318}
Network Adapters	Class: {4d36e972-e325-11ce-bf1c-08002be10318}
Biometric	Class: {53d29ef7-377c-4d14-864b-eb3a85769359}
Disk Drives	Class: {4d36e967-e325-11ce-bf1c-08002be10318}
Storage Volumes	Class: {71a27cdd-812a-11d0-bec7-08002be2092f}
Bluetooth Devices (generic)	Class: {95c7a0a0-3094-11d7-a202-00508b9d7d5a}

Hardware Device

Device Name:

Class ID:

Device ID:

OK Cancel Help

Start | C:\ | Symantec Endpoint P... | 1:05 PM